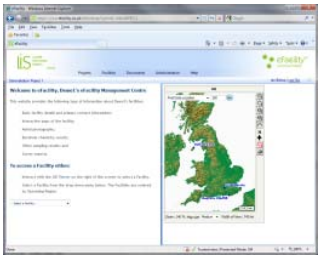




# ▶ eFacility®

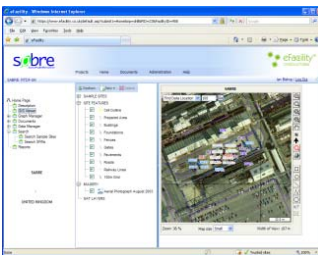
## Web-based management of spatial data, documents and maps



**eFacility®** is one of our most exciting Software as a Service offerings designed for the management of spatially related data and documents from one or more facilities. It is a modular, web-based application that combines environmental data, on-line graphing, GIS based maps, aerial/satellite imagery, auditing and document management, with reporting and analysis tools, all into one dynamic working environment.

eFacility® can:

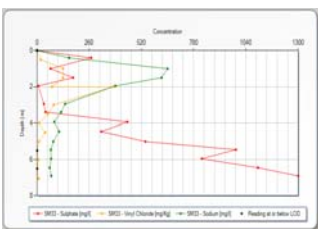
- ▶ Scale information from a local to a global level;
- ▶ Manage one to thousands of facilities;
- ▶ Look after all spatially related environmental data;
- ▶ Enforce standards and quality controls across all facilities and data types;
- ▶ Support and complement the quality and process requirements of ISO 9001 and ISO 14001 accreditations
- ▶ Only needs a standard web browser and internet access to use (no plug-ins);
- ▶ Provide different levels of access and functionality to different users depending on their responsibilities;



eFacility® will manage and integrate many different types of information including groundwater and soil results, geotechnical data (AGS standard), emissions, laboratory analysis, permits, geological maps, cross sections, reports, photographs, stakeholders and property ownerships.

eFacility® projects typically comprise one or more customisable modules:

- ▶ Environmental Monitoring
- ▶ Stakeholder Engagement Plus
- ▶ DocsOnLine™
- ▶ Document Manager
- ▶ Geotechnical Data Manager
- ▶ Asbestos Auditing and Management
- ▶ Property Condition Assessments
- ▶ HazWasteOnline™



**Facility Information**

**Facility Statistics**

▲ Total number of active Facilities: 92

- ☐ Africa (3)
- ☐ Asia (5)
- ☐ Australasia (9)
- ☐ Europe (18)
- ☐ USA (28)
- ☐ Canada (24)
- ☐ South America (5)

Further detail about these modules can be found in the accompanying literature.

Example clients: Atomic Weapons Establishment, Rentokil Initial, Eaton Corporation, Cambridge County Council, SNC Lavalin Nexacor, US Department of Justice, Magnox, British Sugar, Lafarge, Cemex, Tata, Arup.

For further information please contact:

**Stuart Stanford**  
 Sales Manager  
 Tel: + 44 (0)1628 771731  
 Email: sstanford@onetouchdata.com

**Dr. Ian Bishop**  
 Principal  
 Tel: + 44 (0)1628 771731  
 Email: ibishop@onetouchdata.com