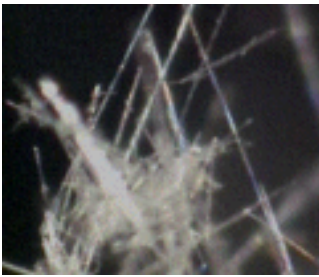




# ► eFacility<sup>®</sup> Asbestos Management module

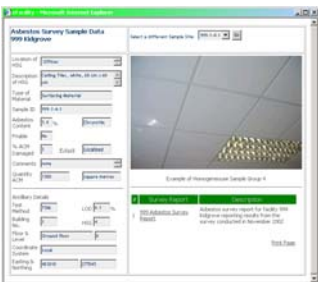


**eFacility<sup>®</sup>** is a secure web application that combines environmental data, on-line graphing, interactive CAD or GIS based maps, aerial photographs and a document manager all into one, web-based, dynamic interface.

This **Asbestos Management module** manages the asbestos issues for multiple facilities. It allows the registered user to locate, identify, view and manage all their Asbestos Containing Materials (ACM) and suspect ACM in any of their facilities around the world, no matter where they or the facilities are located.

The flexibility of eFacility<sup>®</sup> and the GIS-Viewer allows the user to:

- View an interactive site map of every facility;
- Select a particular building within a facility;
- Select a particular floor or structure (e.g. roof);
- View the spatial extent of the ACM/suspect ACM on that floor;
- See where the ACM was actually sampled;
- Review the results supplied by the surveyor and test laboratory relating to that sample point;
- See a picture of what the ACM looks like (e.g. blue floor tile);
- Download and read the original survey report;
- Upload abatement reports;
- Generate various automated reports (e.g. show all ACM materials for a selected location) to help manage the facility;
- Tools to manage and document the removal, repair and encapsulation of ACM.



### Example:

The figure shows the location (purple) of a asbestos containing ceiling tiles present on the twelfth floor of the Smith Building. Clicking on the sample location pops up a summary window detailing the results of the survey sample taken at that point plus a general view/photograph of the material.



For further information please contact:

**Dr. Ian Bishop**  
Principal  
Tel: + 44 (0)1628 771731  
Email: [ibishop@onetouchdata.com](mailto:ibishop@onetouchdata.com)

**Stuart Stanford**  
Sales Manager  
Tel: + 44 (0)1628 771731  
Email: [ssanford@onetouchdata.com](mailto:ssanford@onetouchdata.com)