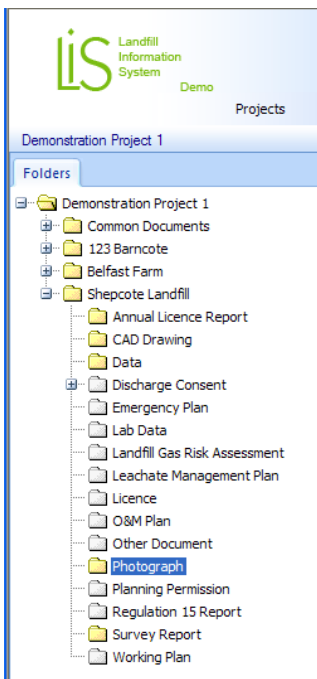




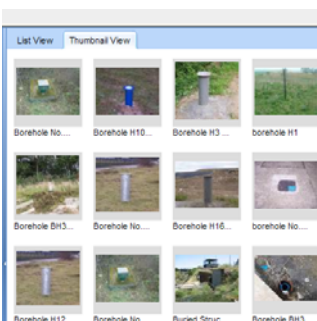
▶ eFacility® Document Manager module



eFacility® is one of our most exciting products designed for the management of spatially related data and documents from one or more facilities. It is a modular, web-based application that combines environmental data, on-line graphing, GIS based maps, aerial/satellite imagery, auditing and document management, with reporting and analysis tools, all into one dynamic working environment.

The **Document Manager** module, eFacility® allows registered users to:

- ▶ Build a virtual data room or library for one or more facilities.
- ▶ Upload any electronic document and link it to a given facility.
- ▶ Open an electronic document in your browser or download it to your PC.
- ▶ Restrict a user's access to documents in one facility, ten facilities, facilities in the truck group, all facilities etc. depending on their security level.
- ▶ Use a keyword-based search engine to search for and locate documents. Users can search by facility, keywords and the AND, OR and NEAR operators.
- ▶ Use an Explorer-like tree-view system to look directly at folders containing a facility's documents.
- ▶ Instead of storing a document such as a global procedure within a facility, users can place them in the Common Documents folder whose contents are available to all users, no matter what their access rights are.
- ▶ Each eFacility® project can define its own set of folders in which to store different types of documents. Folders are customized to reflect a client's normal working practices.
- ▶ Large documents can be loaded in pieces to decrease download time. For example a 9 MB pdf file can be loaded in 3 pieces; Report text (0.5 MB), Figures (1 MB) and Appendices (7.5 MB); a user who just wants to read the report can quickly download the report text and leave the rest for later.
- ▶ Link selected documents (e.g. borehole logs, photograph, access directions) to sample sites or other locations so that the documents are available from the interactive maps.
- ▶ Link photographs (and their direction of view) to the interactive GIS type map.



For further information please contact:

Dr. Ian Bishop
Principal
Tel: + 44 (0)1628 771731
Email: ibishop@onetouchdata.com

Stuart Stanford
Sales Manager
Tel: + 44 (0)1628 771731
Email: stanford@onetouchdata.com