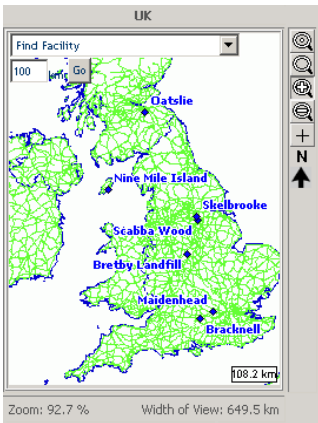




# ► eFacility<sup>®</sup>

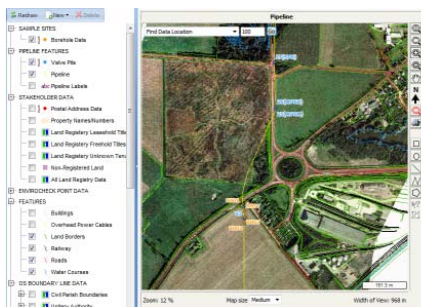
## Environmental Monitoring module



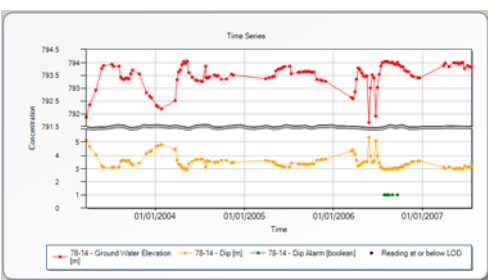
**eFacility<sup>®</sup>** is a modular, web-based application that can combine environmental data, on-line graphing, GIS based maps, aerial/satellite imagery and document management, with reporting and analysis tools, all into one dynamic working environment.

The **Environmental Monitoring** module allows users to import, manage, analyse graph and report time and depth series data for a wide variety of sample sites and publish the results for other users to use or view. The spatial integration of sample sites and other features with interactive maps and documents (e.g. click on a borehole and view the borehole log, photo etc.), means all data and documentation is easily accessible and stored in one centralised system.

The module manages the whole investigation data chain, from the sample or measurement taken in the field (using PDAs), through to the laboratory and then into the database where it is validated and published for other users. This joined up approach maintains a solid and defensible chain of custody, proper version control (no more spreadsheet ambiguities) and ensures that the data can be re-used into the future.



- Select different investigations and view sample site locations (boreholes, air, sediment, fish, milk, vegetation, groundwater monitoring stations etc.) in relation to other themes such as water bodies, buildings, geology or ecology.
- Create new map layers called Spatial Analysis Themes that indicate all the sample sites where, for example determinand X has exceeded threshold Y.
- Link documents to the map e.g. log or photographs to a sample site.
- Dynamically generate customisable graphs of any of the monitoring data, add an Environmental Quality Standard or view in molar concentrations where applicable.
- Graph types include Time, Depth, Multilevel Depth and Multilevel Time series.
- Save your graphs as either Private graphs or share as Public graphs
- Import and QA/QC the data on-line.
- Email Notification – receive an email alert whenever a user defined threshold is exceeded following data upload.
- Support and complement the quality and process requirements of ISO 9001 and ISO 14001 accreditations
- Export the data for use in other programs.



For further information please contact:

**Stuart Stanford**  
Sales Manager  
Tel: + 44 (0)1628 771731  
Email: sstanford@onetouchdata.com

**Dr. Ian Bishop**  
Principal  
Tel: + 44 (0)1628 771731  
Email: ibishop@onetouchdata.com

058-S/05-11

One Touch Data Limited

Address: Suite E, Clyde House, Reform Road, Maidenhead, Berkshire, SL6 8BY, UK

[www.onetouchdata.com](http://www.onetouchdata.com)  
[www.efacility.co.uk](http://www.efacility.co.uk)